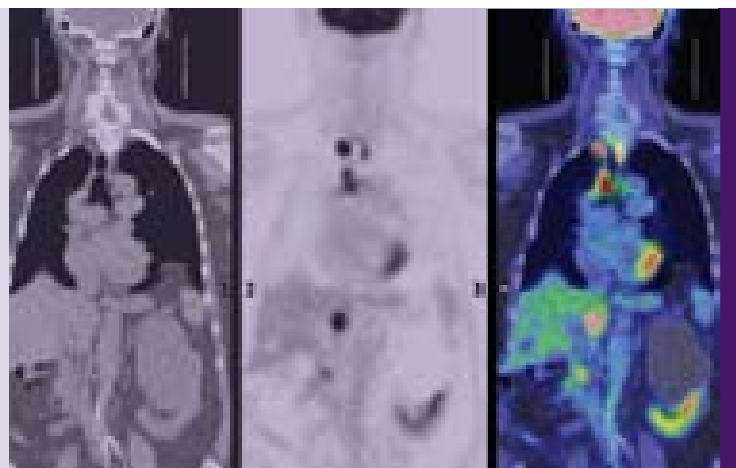
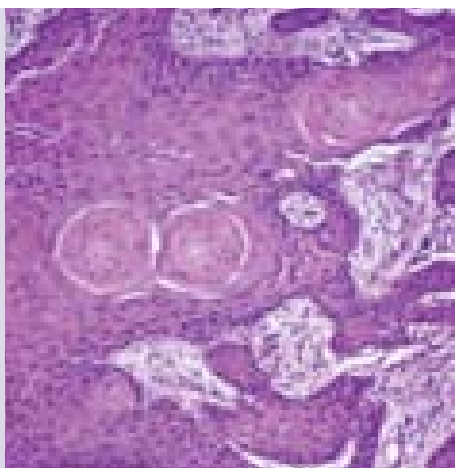


2006

Cancer in New South Wales: **Incidence and Mortality Report**

Elizabeth Tracey, Noore Alam, Wendy Chen and Jim Bishop



NSWHEALTH



cancer
institute
NSW



Regional variation in incidence rates by Area Health Service

Compared with the NSW average, incidence rates for cancer (all sites except NMSC) between 2002 and 2006 were significantly higher in:

- males and females in North Coast Area Health Service (AHS);
- male residents of Hunter and New England AHS, South Eastern Sydney and Illawarra AHS; and
- female residents of Northern Sydney and Central Coast AHS ($p < 0.001$).

Consistent with the previous reporting period (2001–2005) incidence rates were significantly lower in males and females in Sydney South West and Sydney West AHS.

Smoking-related cancers

Incidence rates for lung cancer were significantly higher in male residents of Sydney South West AHS and lower in males in Northern Sydney and Central Coast AHS.

Gastrointestinal cancers

Female residents of North Coast and Greater Southern AHS had higher incidence rates of bowel and rectal cancers respectively. The rates for these two cancers were lower in female residents of Sydney South West AHS. The incidence rates for stomach and liver cancers were higher in males and females in Sydney South West AHS. Male residents in Greater Western AHS had lower incidence rates of liver cancer.

Skin cancers

Incidence rates for lip cancer were significantly higher in male residents in Hunter and New England AHS and Greater Western AHS; and lower in male residents of Sydney South West AHS and Sydney West AHS. Melanoma incidence rates were higher in residents of Northern Sydney and Central Coast AHS, Hunter and New England AHS and North Coast AHS. Melanoma rates were lower in males and females in Sydney South West AHS and Sydney West AHS. The incidence of Kaposi's sarcoma was higher in males in South Eastern Sydney and Illawarra AHS and lower in males in Hunter and New England AHS.

Cancers in males

The incidence rates of prostate cancer were higher in male residents of South Eastern Sydney and Illawarra; and Greater Southern AHS. Rates were lower in Sydney South West AHS. Incidence rates of unknown primary site cancer were higher in male residents of Greater Western and Hunter and New England AHS and lower in male residents of Northern Sydney and Central Coast AHS. Males in Greater Southern AHS had lower incidence rates of thyroid cancer. Mesothelioma incidence rates were lower in male residents of Greater Western AHS.

Cancers in females

Breast cancer incidence rates were higher in Northern Sydney and Central Coast AHS and lower in females in Sydney South West and Sydney West AHS. Thyroid cancer was higher in females in Sydney South West, and South Eastern Sydney and Illawarra AHS; and lower in Hunter and New England; and Greater Southern AHS. Non-Hodgkin's lymphoma was lower in female residents of Greater Western AHS.

Table 16 Regional variation in incidence rates, NSW Area Health Services, 2002–2006

This chart shows new Area Health Services that have significantly ($p < 0.001$) higher or lower age-standardised incidence rates of cancer when compared to New South Wales as a whole.

	Sydney South West		South Eastern Sydney and Illawarra		Sydney West		Northern Sydney and Central Coast		Hunter and New England		North Coast		Greater Southern		Greater Western		
	M	F	M	F	M	F	M	F	M	F	M	F	M	F	M	F	
All Cancers	Low	Low	High	Not significant	Low	Low	Not significant	High	High	Not significant	High	High	Not significant	Not significant	Not significant	Not significant	Not significant
Lip	Low	Not significant	Not significant	Not significant	Low	Not significant	Not significant	Not significant	High	Not significant	Not significant	Not significant	Not significant	Not significant	Not significant	High	Not significant
Stomach	High	High	Not significant	Not significant	Not significant	Not significant	Not significant	Not significant	Not significant	Not significant	Not significant	Not significant	Not significant	Not significant	Not significant	Not significant	Not significant
Rectum	Not significant	Low	Not significant	Not significant	Not significant	Not significant	Not significant	Not significant	Not significant	Not significant	Not significant	Not significant	High	Not significant	Not significant	Not significant	Not significant
Bowel	Not significant	Low	Not significant	Not significant	Not significant	Not significant	Not significant	Not significant	Not significant	Not significant	Not significant	High	Not significant	Not significant	Not significant	Not significant	Not significant
Liver	High	High	Not significant	Not significant	Not significant	Not significant	Not significant	Not significant	Not significant	Not significant	Not significant	Not significant	Not significant	Not significant	Not significant	Low	Not significant
Lung	High	Not significant	Not significant	Not significant	Not significant	Not significant	Low	Not significant	Not significant	Not significant	Not significant	Not significant	Not significant	Not significant	Not significant	Not significant	Not significant
Melanoma	Low	Low	Not significant	Not significant	Low	Low	High	High	High	High	High	High	High	Not significant	Not significant	Not significant	Not significant
Mesothelioma	Not significant	Not significant	Not significant	Not significant	Not significant	Not significant	Not significant	Not significant	Not significant	Not significant	Not significant	Not significant	Not significant	Not significant	Not significant	Low	Not significant
Kaposi's sarcoma	Not significant	Not significant	High	Not significant	Not significant	Not significant	Not significant	Not significant	Low	Not significant	Not significant	Not significant	Not significant	Not significant	Not significant	Not significant	Not significant
Breast	Not significant	Low	Not significant	Not significant	Not significant	Low	Not significant	High	Not significant	Not significant	Not significant	Not significant	Not significant	Not significant	Not significant	Not significant	Not significant
Prostate	Low	Not significant	High	Not significant	Not significant	Not significant	Not significant	Not significant	Not significant	Not significant	Not significant	Not significant	High	Not significant	Not significant	Not significant	Not significant
Thyroid	Not significant	High	Not significant	High	Not significant	Not significant	Not significant	Not significant	Not significant	Low	Not significant	Not significant	Low	Low	Not significant	Not significant	Not significant
Non-Hodgkin's lymphoma	Not significant	Not significant	Not significant	Not significant	Not significant	Not significant	Not significant	Not significant	Not significant	Not significant	Not significant	Not significant	Not significant	Not significant	Not significant	Not significant	Low
Unknown primary	Not significant	Not significant	Not significant	Not significant	Not significant	Not significant	Low	Not significant	High	Not significant	Not significant	Not significant	Not significant	Not significant	Not significant	High	Not significant



The following cancer types showed no significant geographical variation across Area Health Service regions within New South Wales: bladder, brain, cervix, head and neck, kidney, leukaemia, multiple myeloma, oesophagus, ovary, pancreas, testis and uterus.

Regional variation in mortality rates by Area Health Service

Compared with the NSW average, mortality rates in 2006 were:

- significantly higher overall in male residents of Hunter and New England AHS ($p < 0.001$); and
- significantly lower in male residents of Northern Sydney and Central Coast AHS ($p < 0.001$).

Most AHS cancer mortality rates reflect the State average.

Mortality rates for the period 2002 to 2006 for:

- Lung cancer was significantly higher in male residents of Sydney South West AHS. Males in Northern Sydney and Central Coast AHS had lower mortality rates for lung and head and neck cancers.
- Liver cancer was significantly higher in males and females in Sydney South West AHS.
- Melanoma was higher in male residents of North Coast AHS and lower in male residents of Sydney South West AHS.
- Prostate cancer was higher in males in Hunter and New England AHS.
- Unknown primary was higher in male residents of Greater Western AHS.
- Breast cancer mortality rates were lower in females in the North Coast AHS.
- Mesothelioma mortality rates were lower in males in Greater Western AHS.

Table 17 Regional variation in mortality rates, NSW Area Health Services, 2002–2006

This chart shows New Area Health Services that have significantly ($p < 0.001$) higher or lower age-standardised mortality rates of cancer when compared to New South Wales as a whole.

	Sydney South West		South Eastern Sydney and Illawarra		Sydney West		Northern Sydney and Central Coast		Hunter and New England		North Coast		Greater Southern		Greater Western	
	M	F	M	F	M	F	M	F	M	F	M	F	M	F	M	F
All Cancers							Low		High							
Head and neck							Low									
Liver	High	High														
Lung	High						Low									
Melanoma of skin	Low										High					
Mesothelioma																Low
Breast												Low				
Prostate									High							
Unknown Primary																High

High
 Low
 Not significantly different from NSW average.

The following cancer types showed no significant geographical variation across Area Health Service regions within New South Wales: lip, colon, rectum, bowel, pancreas, uterus, ovary, cervix, non-Hodgkin's lymphoma, stomach, kidney, testis, leukaemia, kaposi's sarcoma, bladder, brain and thyroid.