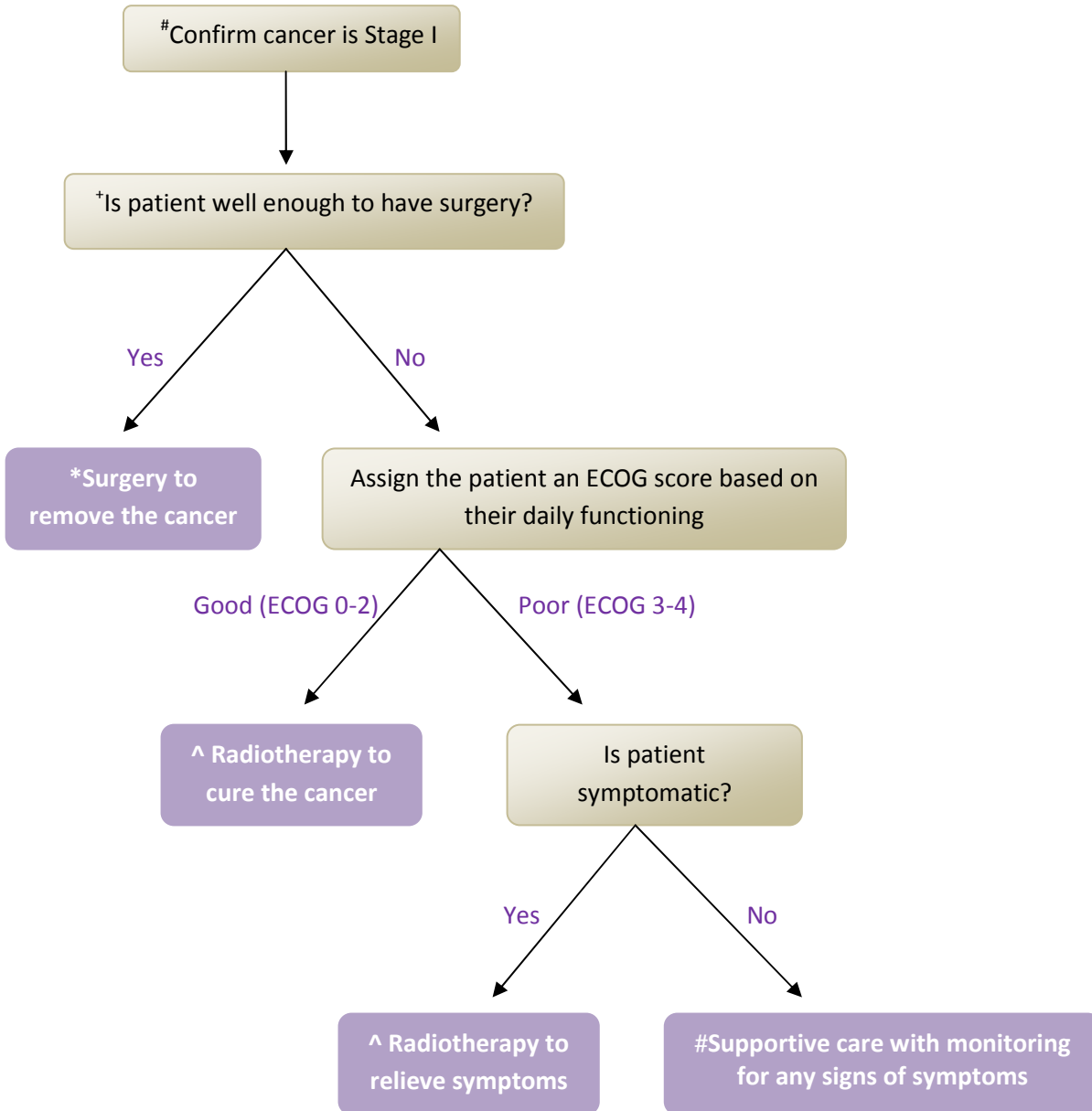


Management of Non-Small Cell Lung Cancer Guide for General Practitioners

Clinical Stage I

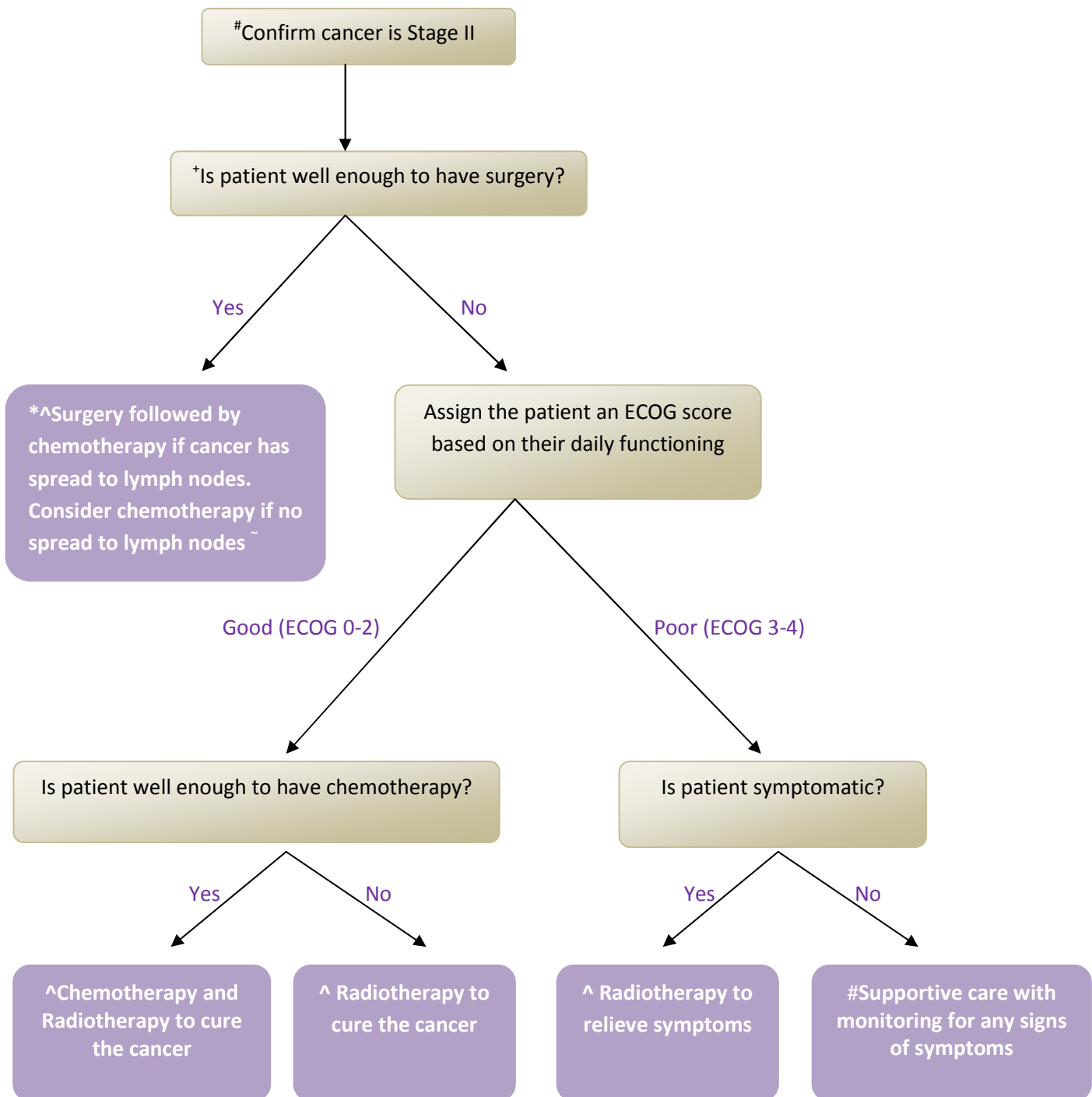
Cancer only in one lobe of lung and $\leq 5\text{cm}$



- Quitting smoking will improve survival and quality of life
- + MDT assessment: the Surgeon plus Respiratory Physician together are best to assess fitness for surgery, the Radiation Oncologist for radiation and Medical Oncologist for chemotherapy, lung cancer nurse, social worker, physiotherapist, dietician and occupational therapist
- # Supportive care (including): Access to clinical care coordination or lung cancer nurse; Access to psychosocial and spiritual support; Look for support in community setting; GPs need to play important role throughout
- * Stabilise other conditions before active treatment
- ^ Follow radiotherapy protocols described in EviQ <https://www.eviq.org.au/>

Clinical Stage II

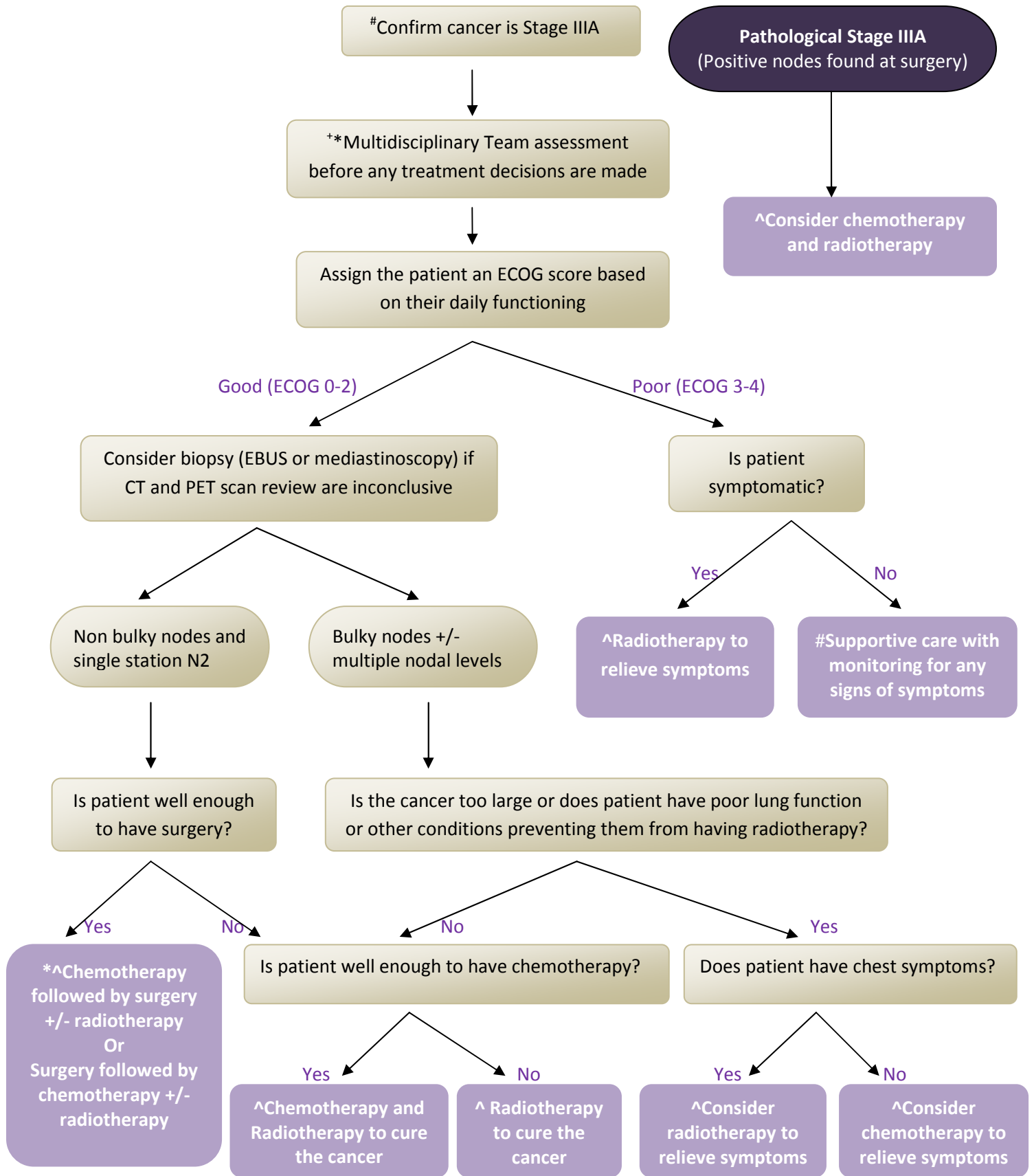
Cancer in the lung with spread to nearby (hilar) lymph nodes, or cancer >5cm or that has grown into the chest wall



- Quitting smoking will improve survival and quality of life
- + MDT assessment: the Surgeon plus Respiratory Physician together are best to assess fitness for surgery, the Radiation Oncologist for radiation and Medical Oncologist for chemotherapy, lung cancer nurse, social worker, physiotherapist, dietician and occupational therapist
- # Supportive care (including): Access to clinical care coordination or lung cancer nurse; Access to psychosocial and spiritual support; Look for support in community setting; GPs need to play important role throughout
- * Stabilise other conditions before active treatment
- ^ Follow chemotherapy and radiotherapy protocols described in EviQ <https://www.eviq.org.au/>

Clinical Stage IIIA

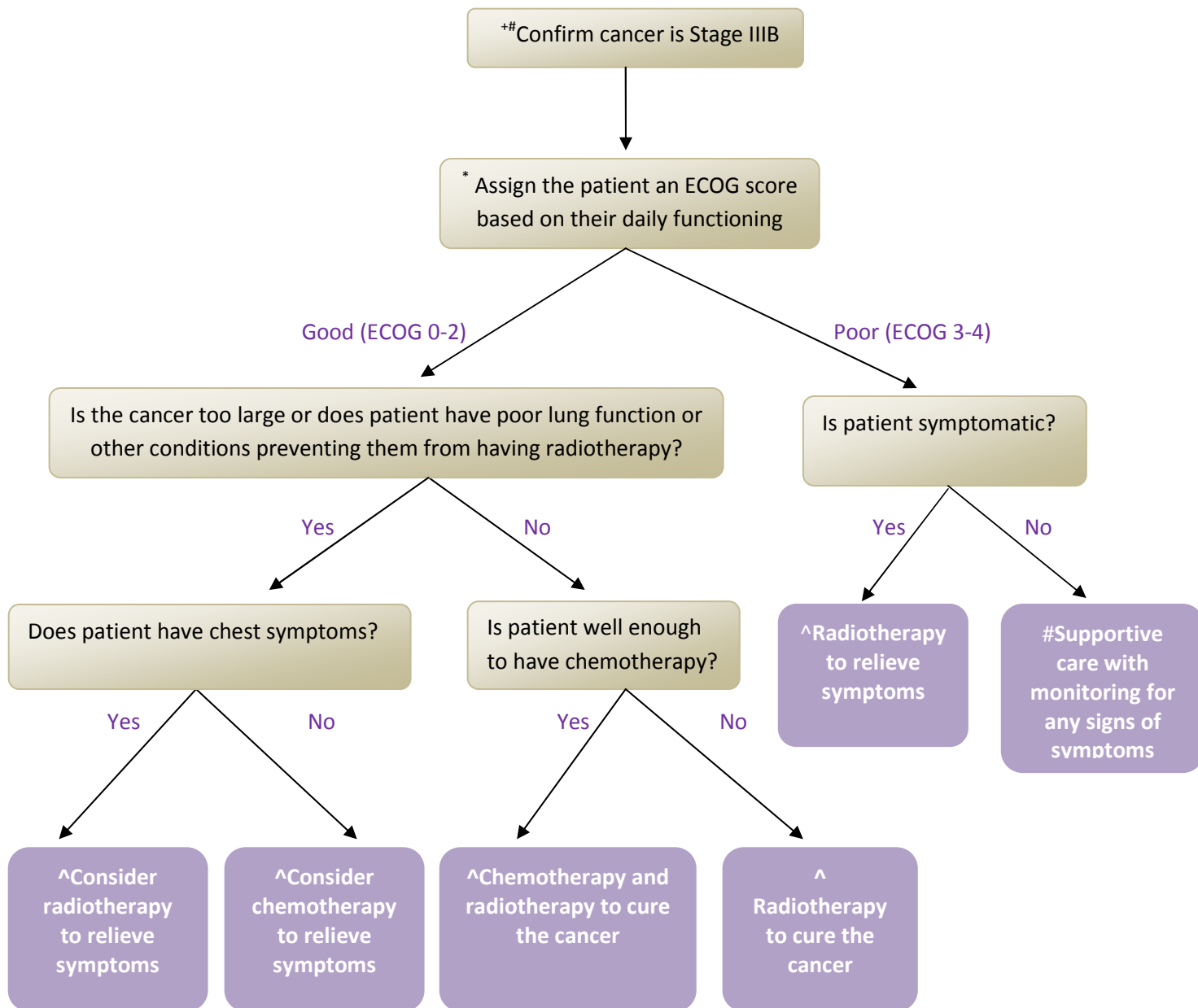
Cancer has spread to lymph nodes in the centre of the chest



- Quitting smoking will improve survival and quality of life
- + MDT assessment: the Surgeon plus Respiratory Physician together are best to assess fitness for surgery, the Radiation Oncologist for radiation and Medical Oncologist for chemotherapy, lung cancer nurse, social worker, physiotherapist, dietician and occupational therapist
- # Supportive care (including): Access to clinical care coordination or lung cancer nurse; Access to psychosocial and spiritual support; Look for support in community setting; GPs need to play important role throughout
- * Stabilise other conditions before active treatment
- ^ Follow chemotherapy and radiotherapy protocols described in EviQ <https://www.eviq.org.au/>

Clinical Stage IIIB

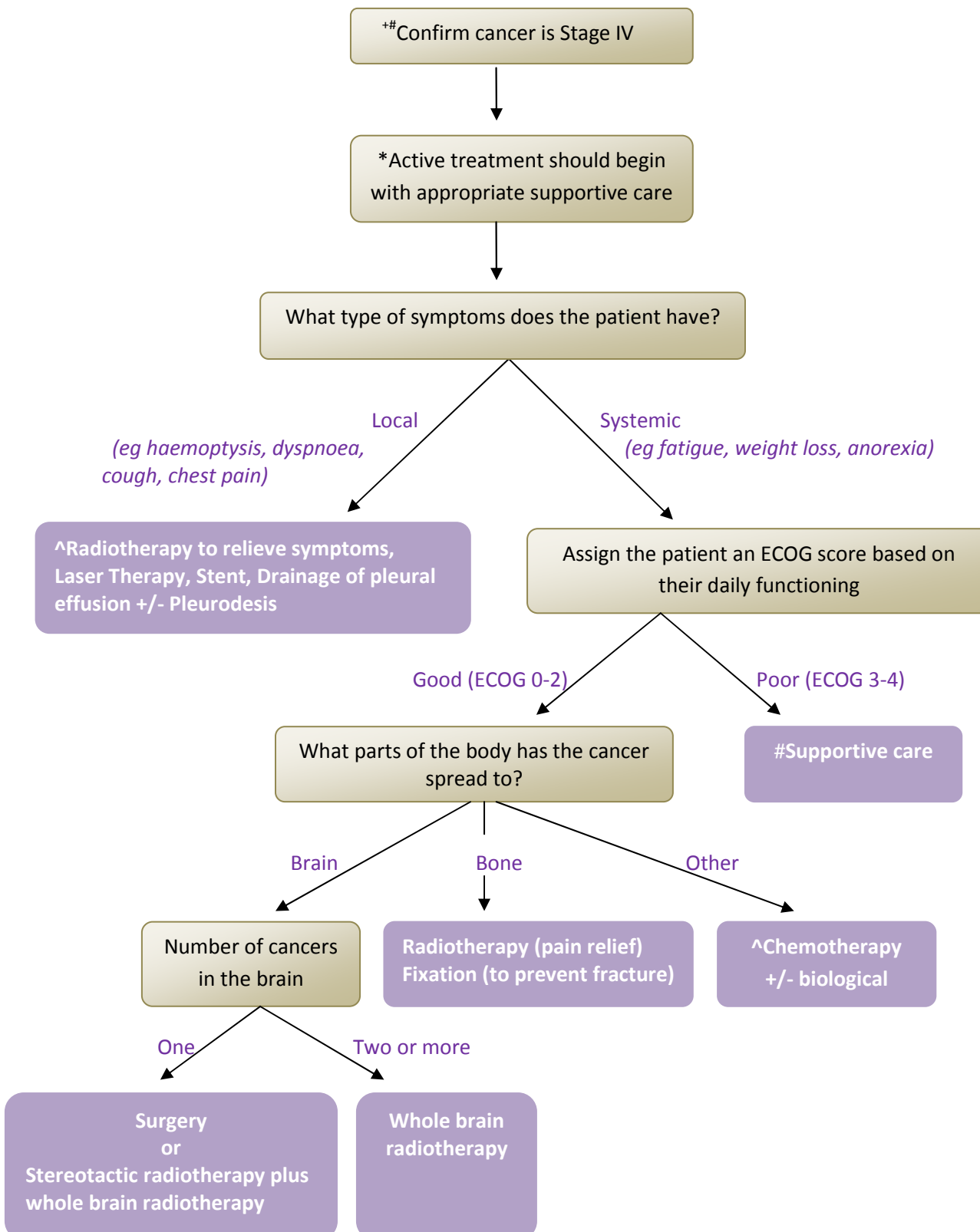
Cancer has spread more extensively to lymph nodes in the chest, or there is a collection of fluid in the pleural space around the lungs, or there are tumours in more than one lobe



- Quitting smoking will improve survival and quality of life
- + MDT assessment: the Surgeon plus Respiratory Physician together are best to assess fitness for surgery, the Radiation Oncologist for radiation and Medical Oncologist for chemotherapy, lung cancer nurse, social worker, physiotherapist, dietician and occupational therapist
- # Supportive care (including): Access to clinical care coordination or lung cancer nurse; Access to psychosocial and spiritual support; Look for support in community setting; GPs need to play important role throughout
- * Stabilise other conditions before active treatment
- ^ Follow chemotherapy and radiotherapy protocols described in EviQ <https://www.eviq.org.au/>

Clinical Stage IV

Cancer has spread to distant parts of the body eg brain or bones



- Quitting smoking will improve survival and quality of life
- + MDT assessment: the Surgeon plus Respiratory Physician together are best to assess fitness for surgery, the Radiation Oncologist for radiation and Medical Oncologist for chemotherapy, lung cancer nurse, social worker, physiotherapist, dietician and occupational therapist
- # Supportive care (including): Access to clinical care coordination or lung cancer nurse; Access to psychosocial and spiritual support; Look for support in community setting; GPs need to play important role throughout
- * Stabilise other conditions before active treatment
- [^] Follow chemotherapy and radiotherapy protocols described in EviQ <https://www.eviq.org.au/>
- ~ Requires sufficient tissue to be taken at biopsy for testing

